

EXTERIOR LIGHTING SPECIFICATION SHEET

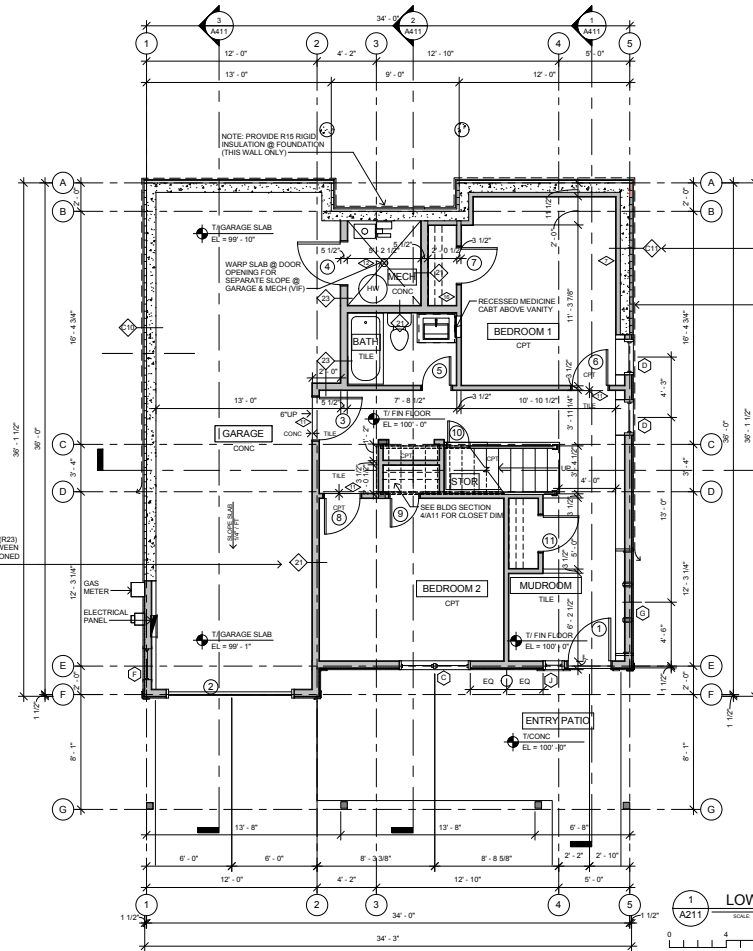


**Cut Sheet - KCH-9236-AZ**

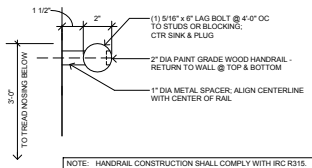
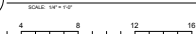
**Cans & Bullets Hard Contemporary Outdoor Wall Sconce**

This Kichler Lighting outdoor wall sconce features a warm Architectural Bronze finish that gives an unexpected look to the clean lines and modern shape. From the Cans & Bullets Collection, this light fixture will effortlessly compliment a number of different architectural styles. Dark skies compliant.

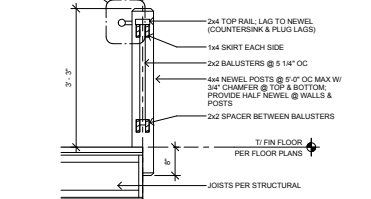
Brand: Kichler Lighting  
 Height: 9.00"  
 Width: 6.00"  
 Finish: Architectural Bronze  
 Lamping: (1) 150W medium base (E26) (Bulb NOT include); medium base (E26) (Bulb NOT include)



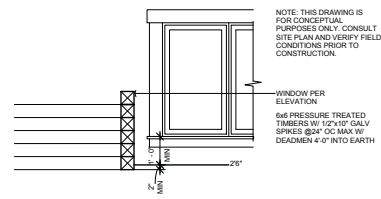
LOWER FLOOR PLAN



4 TYPICAL INTERIOR HANDRAIL



3 TYP INT GUARD RAIL



2 WINDOW WELL DETAIL

- FLOOR PLAN KEY NOTES**
- ◊ LOCATE ROUGH OPENING FROM THIS POINT
  - ◊ LAYOUT POINT FOR WALL
  - ◊ CENTER WALL ON COLUMN
  - ◊ CENTER DOOR IN WALL
  - ◊ CENTER WINDOW IN INSIDE FACE OF WALL
  - ◊ CANTILEVER ABOVE
  - ◊ PROVIDE 2x4 FURRED WALL @ FACE OF FDN
  - ◊ HALF WALL @ FDN (RE: DTL)
  - ◊ DROPPED BEAM ABOVE (RE: STRUCTURAL)
  - ◊ WINDOW BRACKET ABOVE (RE: ELEVATIONS)
  - ◊ FLOORING MATERIAL TRANSITION
  - ◊ FLOOR DRAIN
  - ◊ ONE HOUR RATED FLUE
  - ◊ PULL DOWN STAIR FOR ATTIC ACCESS (MIN RO 22"x30")
  - ◊ TYP ROD & SHELF - SEE INTERIOR FINISH NOTES
  - ◊ TYPICAL CLOSET: 2'-0" INSIDE STUD DIM W/ ROD & SHELF - PER INTERIOR FINISH NOTES
  - ◊ TIMBER POST, ALIGN W/ BM ABV IF PRESENT (W/F)
  - ◊ CUBBIES - SEE INTERIOR FINISH NOTES
  - ◊ PANTRY SHELVING - SEE INTERIOR FINISH NOTES
  - ◊ PROVIDE BLOCKING 2'-0" AFF FOR CLOSET SHELVING, COAT HOOKS OR IRONING BD (W/F)
  - ◊ PROVIDE BLOCKING 2'-0" AFF FOR TOWEL BAR
  - ◊ PROVIDE SINK & PLUMBING FOR KITCHENETTE
  - ◊ PROVIDE WATER CONN FOR ICE MAKER, VERIFY SIZING & COIN REQMENTS W/ FINAL APPLANCE SELECTION
  - ◊ RECESSED WASHER BOX
  - ◊ FREEZE PROOF HOSE BIBB
  - ◊ ENTERTAINMENT CENTER CABINET (PER OWNER), PROVIDE ELEC, CATV & PHONE CONNECTIONS @ WALL
  - ◊ TYPICAL FIXED SHELVES - SEE INTERIOR FINISH NOTES
  - ◊ BASE CABINET PER OWNER
  - ◊ UPPER CABINET PER OWNER
  - ◊ WALL MTD TELESCOPING DRYING RACKS PER OWNER
  - ◊ ADJ MEDIA SHELVING
  - ◊ STORAGE CABINET / CLOSET BUILT-INS PER OWNER
  - ◊ VERIFY WALL DIM WITH EQPT SIZING PRIOR TO FRAMING
  - ◊ SNOW GRATE
  - ◊ RECYCLING AREA - 4 SF MIN
  - ◊ TELEVISION (FRO) - PROVIDE ELEC & CATV CONN AT WALL

matthew stals architects  
 108 north ridge street  
 p o box 135  
 blackridge  
 colorado 80424  
 970 453 0444



www.stalsarchitects.com

gunnison #1  
 lot 1, block 3  
 south one neighborhood  
 frisco, colorado  
 PROJECT # 1135

COPYRIGHT  
 NO REPRODUCTION OR ANY REPRODUCTION OR  
 SALE WITHOUT WRITTEN CONSENT IS FORGOTTEN

ISSUE:

review	12 mar 2012
review	23 mar 2012
50% final	20 apr 2012
80% final	09 may 2012
90% final	31 may 2012
95% coord	07 june 2012
permit	20 july 2012

LOWER FLOOR PLAN  
 NOTES & DETAILS  
**A211**

