



• PEAK ONE •
NEIGHBORHOOD
FRISCO, COLORADO

CLIENT:

TEN MILE PARTNERS LLC
777 PEARL ST. SUITE 200
BOULDER, CO 80302

ARCHITECT:

WOLFF-LYON ARCHITECTS
777 PEARL STREET - SUITE 210
BOULDER, CO 80302
T: (303) 447-2786
F: (303) 447-2968

STRUCTURAL ENGINEER:

KEYMARK ENTERPRISES, LLC
6707 WINCHESTER CIRCLE
BOULDER, CO 80301
T: (303) 443-8033
F: (303) 443-9054

WYLIE
VERSION 2 (gar. entrance at side)
• PEAK ONE •
NEIGHBORHOOD
FRISCO, COLORADO



ISSUE DATES:

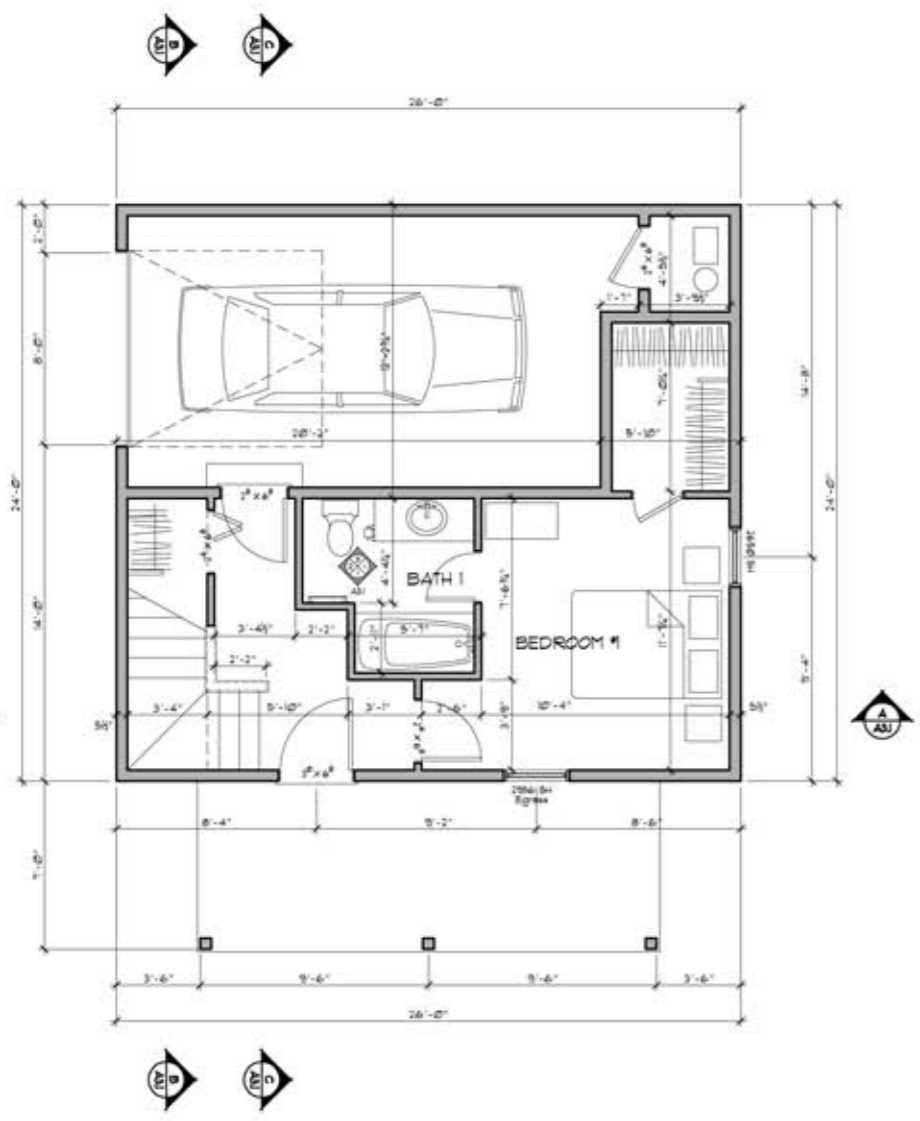
DATE	DESCRIPTION

REVISIONS:

DATE	DESCRIPTION

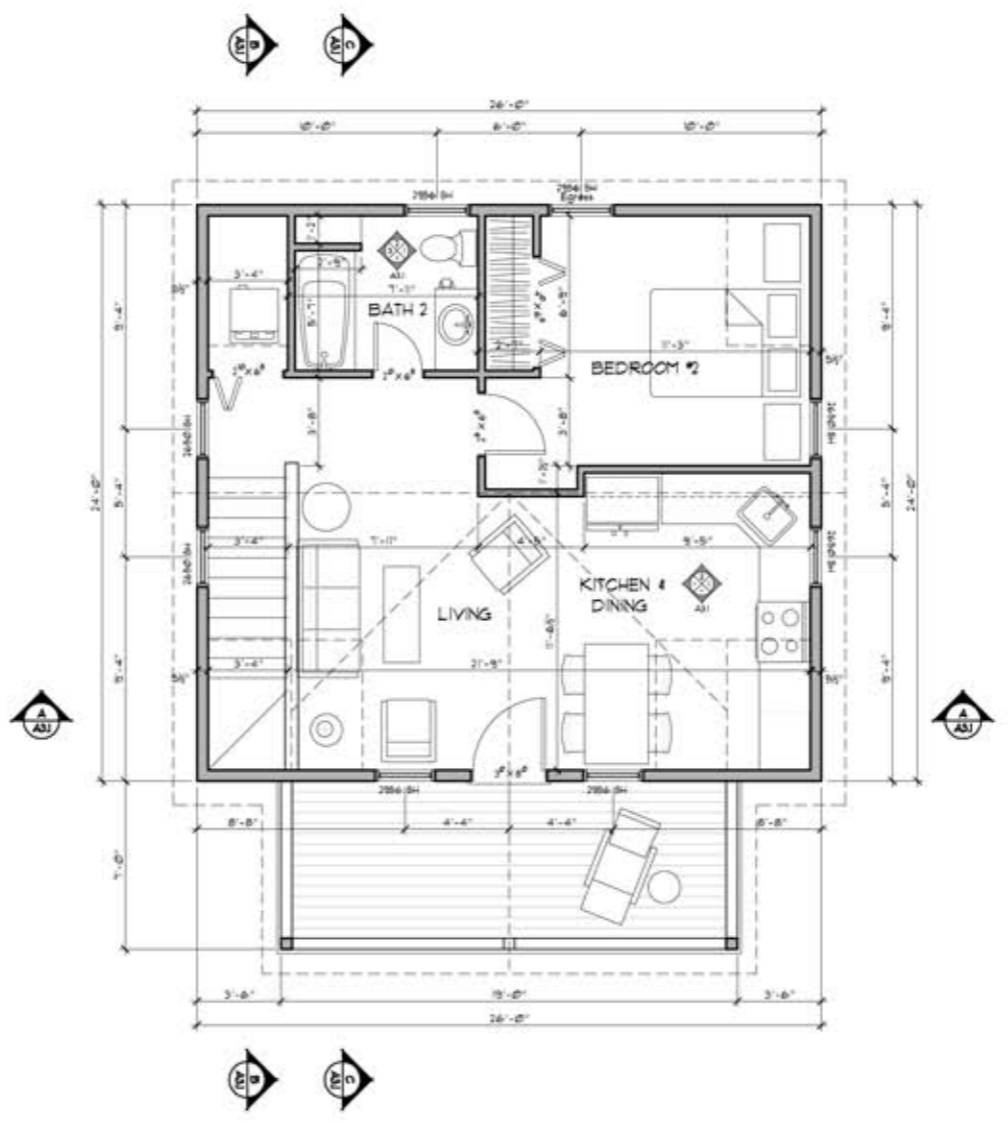
DRAWN BY:
PROJECT No.: 1001

FLOOR PLANS
A1.1



GROUND LEVEL PLAN

Scale: 1/4"=1' (24"x 36" sheet) or 1/8"=1' (11"x 17" sheet)



UPPER LEVEL PLAN

Scale: 1/4"=1' (24"x 36" sheet) or 1/8"=1' (11"x 17" sheet)

Ground floor: 368 sf
Upper Floor: 573 sf
TOTAL: 941 sf